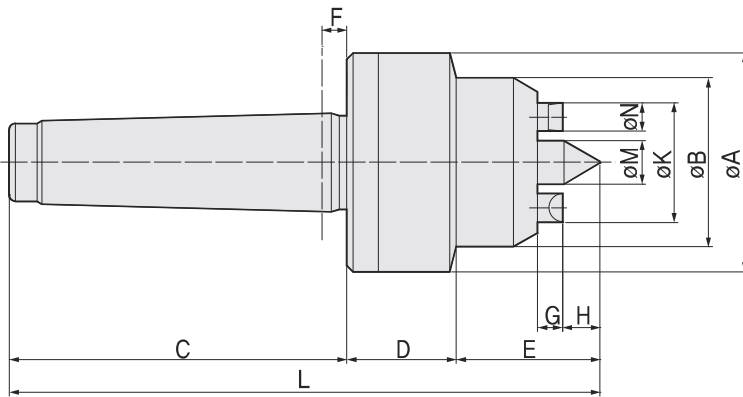


FACE DRIVER

FEATURES ;

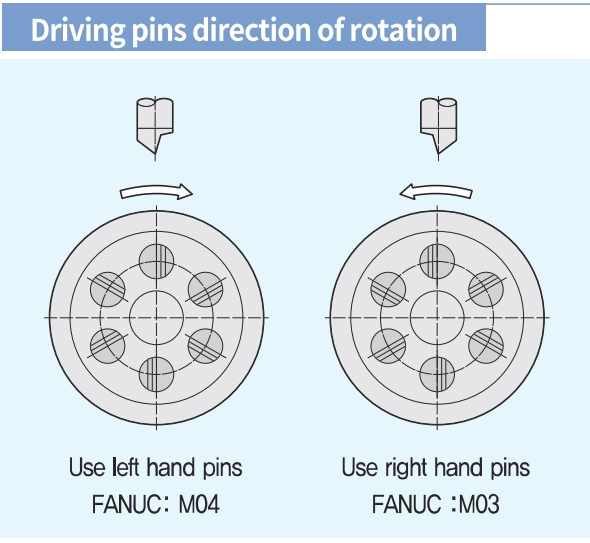
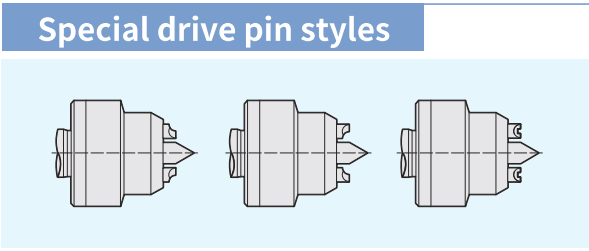
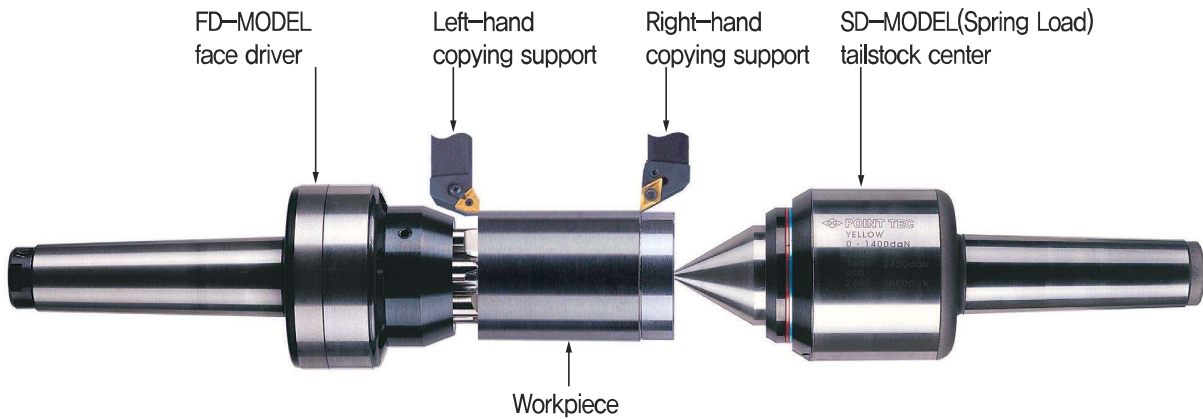
- Accuracy guaranteed to 0,02mm TIR (0,0008") for center point.
- Excellent for turning machine and gear hobbing process.
- Only single clamping is needed to entire cutting process.
- Able to use at Head stock instead of clamping chuck.
- Greater accuracy in machining operations.
- Keep the workpiece stable with no slippage even during heavy cuts.
- Nano technology finished drive pins offer superior life time.
- Faster loading time. Greater time save in mass production.
- Wide range clamping capability.



Dimension

Unit : mm, kg

MODEL	MODEL NO.	MT	A	B	C	D	E	F	G	H	L	K	M	N	Number of driving pins	Work size	Workpiece Weight	Weight	Max Run Out
FD31	090803	3	42	30	89	24,5	29,5	6	5	4,3	143	17	5	5	4	ø 19~ø 34	50	0,8	0,02
	090804	4	42	30	108	24,5	29,5	8	5	4,3	163	17	5	5	4	ø 19~ø 34	50	1,0	0,02
	090805	5	42	30	136	24,5	29,5	8	5	4,3	191	17	5	5	4	ø 19~ø 34	50	1,5	0,02
FD32	090903	3	52	40	89	26,5	35,8	6	6,5	7,8	150,3	26	9	7	5	ø 28~ø 50	55	1,0	0,02
	090904	4	52	40	108	26,5	35,8	8	6,5	7,8	170,3	26	9	7	5	ø 28~ø 50	55	1,2	0,02
	090905	5	52	40	136	26,5	35,8	8	6,5	7,8	198,3	26	9	7	5	ø 28~ø 50	55	2,0	0,02
FD33	091003	3	70	54	89	36	45	6	9	11	170	38	14	9	6	ø 40~ø 72	65	1,2	0,02
	091004	4	70	54	108	36	45	8	9	11	189	38	14	9	6	ø 40~ø 72	65	2,0	0,02
	091005	5	70	54	136	36	45	8	9	11	217	38	14	9	6	ø 40~ø 72	65	2,9	0,02
FD34	091104	4	82	72	108	40	56,1	8	11	14,1	204,1	54	20	14	6	ø 55~ø 100	100	3,1	0,02
	091105	5	82	72	136	40	56,1	8	11	14,1	232,1	54	20	14	6	ø 55~ø 100	100	3,9	0,02

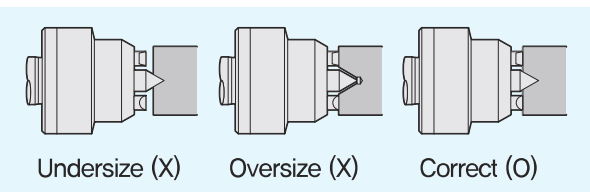


Center hole size

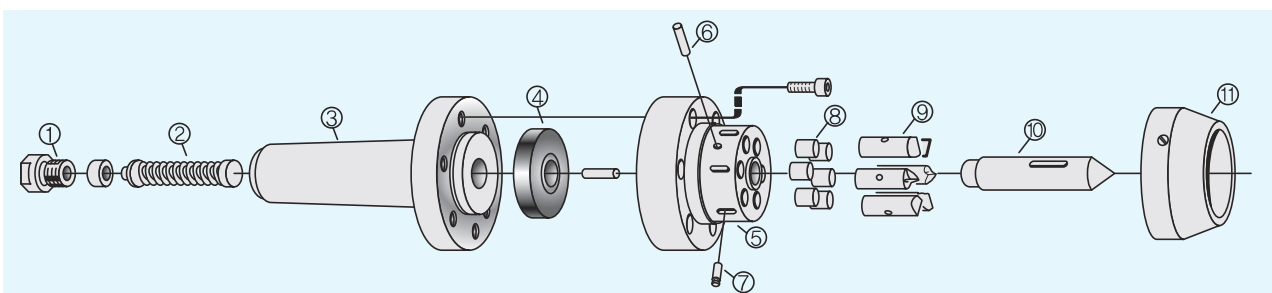
NO	MODEL	CENTER HOLE DIA. LIMITS			
		MIN(∅)		MAX(∅)	
		inch	mm	inch	mm
1	FD31	0,08	2	0,16	4
2	FD32	0,16	4	0,31	8
3	FD33	0,16	6	0,47	12
4	FD34	0,31	8	0,63	16

FD Sparepart

PART NO.	PART NAME	FD31	FD32	FD33	FD34
④	SP urethane	90816	90916	91016	91116
⑥	Pin-At-Point	90821	90921	91021	91121
⑦	Pin-At-Pin	90822	90922	91022	91122
⑧	Roller	90817	90917	91017	91117
⑨	Drive pin	90812	90912	91012	91112
⑩	Center point	90814	90914	91014	91114
⑪	Cover	90823	90923	91023	91123



The construction of face driver



① End cover ② Spring rod ③ Shank ④ SP urethane ⑤ Head ⑥ Pin At Point ⑦ Pin At Pin ⑧ Roller ⑨ Drive pin ⑩ Center Point ⑪ Cover

