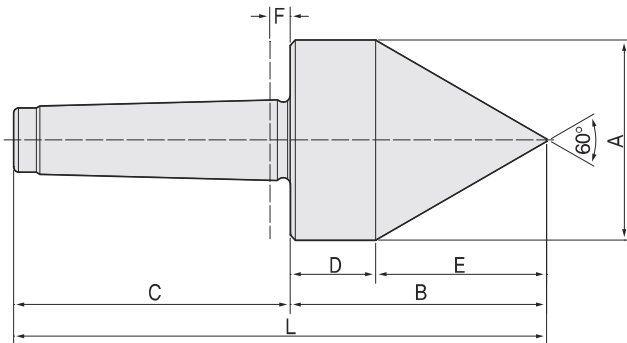


BP60

FEATURES ;

- Accuracy guaranteed to 0,003mm TIR (0,0001"),
- Excellent for pipe work, tube work and parts with extra-large center holes,
- Heat-treated point to HRc 60±2,
- Combination of Double row angular contact bearing, thrust bearing, and radical ball bearing for performance,
- Used both as a centering taper for hollow bodies and as a center for machining standard workpiece

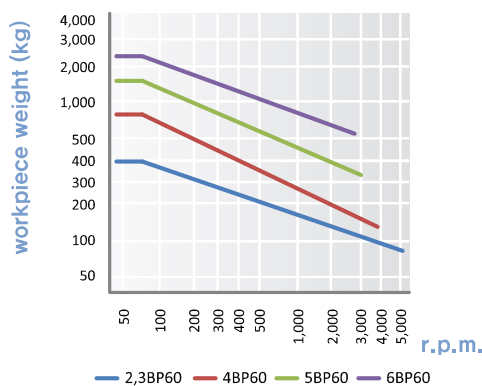


Dimension

Unit : mm, kg

MODEL	MT	A	B	C	D	E	F	L	Workpiece Weight	Max, R.P.M	Weight	Max, Run Out
081002	2	44	66	68	28	38	6	134	400	5,000	1,5	0,003
081003	3	56	78,5	85	30	48,5	6	163,5	400	5,000	1,5	0,003
081004	4	78	100	108	33,3	66,7	8	208	800	3,800	2,3	0,003
081005	5	98	125	136	41	84	8	261	1,600	3,000	5	0,003
081006	6	118	154	189	53	101	10	343	2,500	2,500	11,2	0,005

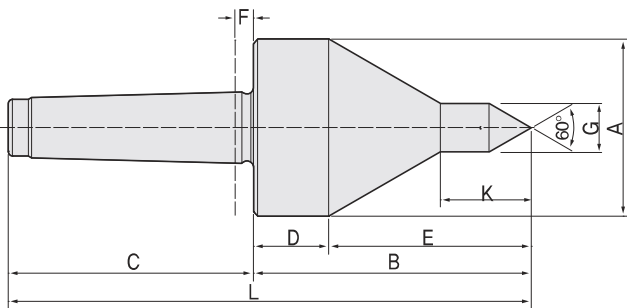
BP60 type technical data



BP60A

FEATURES ;

- Accuracy guaranteed to 0,003mm TIR (0,0001"),
- Excellent for pipe work, tube work and parts with extra-large center holes,
- Heat-treated point to HRc 60±2,
- Combination of Double row angular contact bearing, thrust bearing, and radical ball bearing for performance,
- Used both as a centering taper for hollow bodies and as a center for machining standard workpiece,

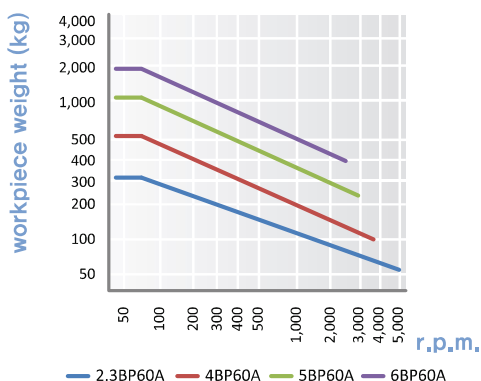


Dimension

Unit : mm, kg

MODEL	MT	A	B	C	D	E	F	G	K	L	Workpiece Weight	Max, R.P.M	Weight	Max, Run Out
085002	2	44	79	68	32,3	46,7	6	12	19	147	320	5,000	1	0,003
085003	3	56	86	85	28,9	57,1	6	12	19	171	320	5,000	1	0,003
085004	4	78	103,5	108	26,3	77,2	8	16	23,5	211,5	560	3,800	2,3	0,003
085005	5	98	140	136	41,6	98,4	8	19	30	276	1,200	3,000	5	0,003
085006	6	118	165	189	44,3	120,7	10	19	35	354	2,000	2,500	10	0,005

BP60A type technical data



BN
BNN
BNH
BS
BHS
TN
WP
BP80
BP60
BNI
DC
SD
FD
HS
BB