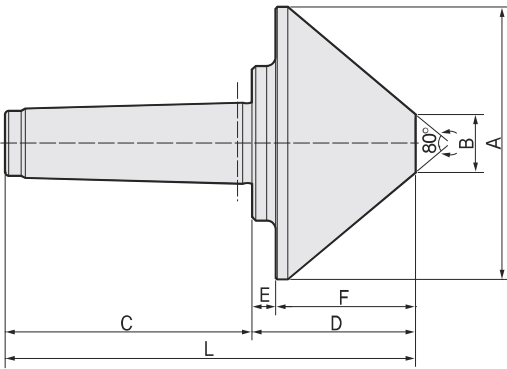


BP80

FEATURES ;

- Accuracy guaranteed to 0,003mm TIR (0,0001").
- Excellent for heavy duty lathe applications.
- For pipe work, tube work, and parts with extra-large center holes.
- Heat-treated point to HRC 60±2.
- Combination of taper roller bearing, thrust bearing, and high-precision radial ball bearing for performance.
- The design prevents ingress of coolant and chips.

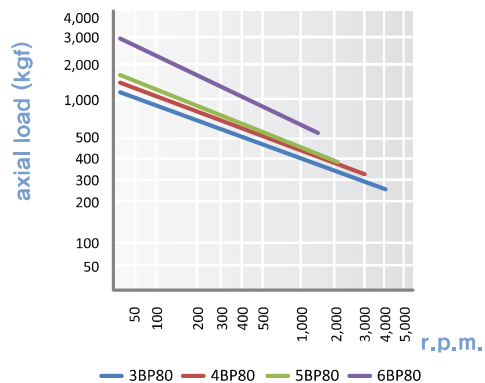
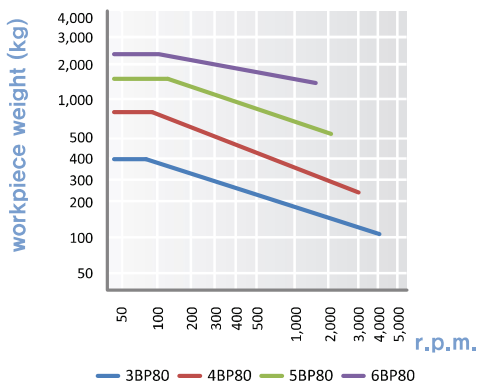


Dimension

Unit : mm, kg

MODEL	MT	A	B	C	D	E	F	L	Workpiece Weight	Max, R.P.M	Weight	Max, Run Out
083003	3	95	20	85	60	10	50	145	400	4,000	2,4	0,003
083004	4	125	29	108	77	13	64	185	800	3,000	3,9	0,003
083005	5	150	32	136	90	13	77	226	1,600	2,000	6,9	0,003
083006	6	200	38	189	120	15	105	309	2,500	1,500	17	0,005

BP80 type technical data



BN
BNN
BNH
BS
BHS
TN
WP
BP80
BP60
BNI
DC
SD
FD
HS
BB