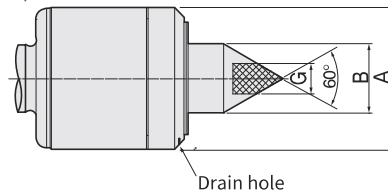
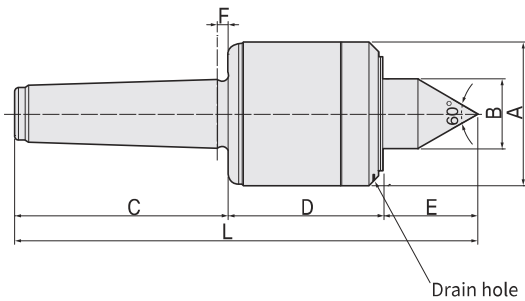


BHS

FEATURES ;

- Accuracy guaranteed to 0,002mm TIR (0,0001"),
- Excellent for grinders and CNC machines,
- High RPM (Up to 12,000).
- Heat-treated point to HRC 60±2,
- Based on triple angular bearings for superior performance,
- Drain hole have to be located on bottom side,
- Labyrinth seal for coolant deflectors and super high speed,
- Heat-treated body for extra strength, rigidity and long life,
- Carbide point available (BHSC TYPE),
- Carbide point to HRA 90±5,



Available

Carbide Tipped Points BHSC-TYPE

- MT2 : 042002
- MT3 : 042003
- MT4 : 042004
- MT5 : 042005

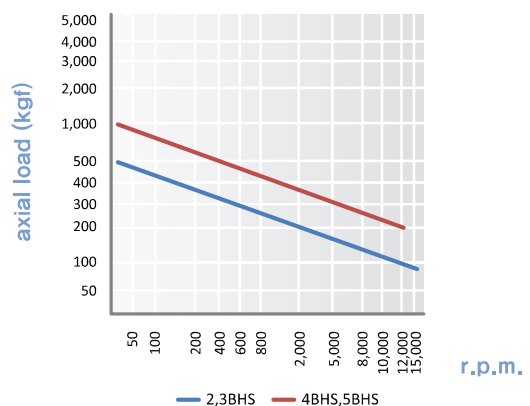
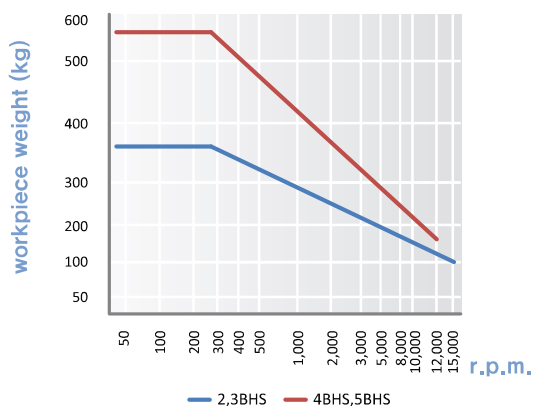
Dimension

Unit : mm, kg

MODEL	MT	A	B	C	D	E	F	G	L	Workpiece Weight	Max. R.P.M	Weight	Max. Run Out
041002 (042002)	2	50	20	68	54	26	4	10	148	360	15,000	1,5	0,002
041003 (042003)	3	50	20	85	54	26	4,5	10	165	360	15,000	1,8	0,002
041004 (042004)	4	70	30	108	75	37	5,3	14	220	560	12,000	2,2	0,002
041005 (042005)	5	70	30	136	75	37	6,3	18	248	560	12,000	5,2	0,002

※(MODEL NO) : Carbide Tip Type

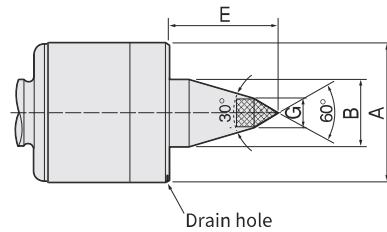
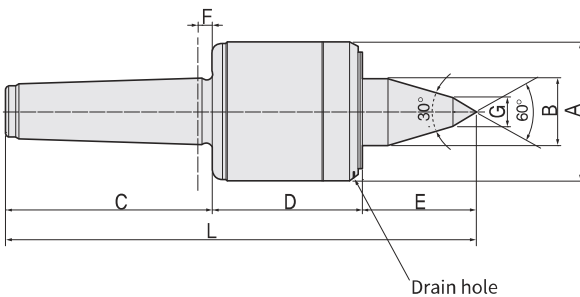
BHS type technical data



BHSL30

FEATURES ;

- Accuracy guaranteed to 0,002mm TIR (0,0001"),
- Excellent for grinders and CNC machines,
- Improve tool clearance and machining flexibility for cramped area work,
- High RPM (Up to 12,000),
- Heat-treated point to HRC 60±2,
- Based on triple angular bearings for superior performance,
- Labyrinth seal for coolant deflectors and super high speed,
- Anti-friction seal for coolant deflectors and high speed,
- Heat-treated body for extra strength, rigidity and long life,
- Carbide point available (BHSL30C TYPE),
- Carbide point to HRa 90±5,



Available

- Carbide Tipped Points** BHSL30C-TYPE
- MT2 : 044002 · MT5 : 044005
 - MT3 : 044003
 - MT4 : 044004

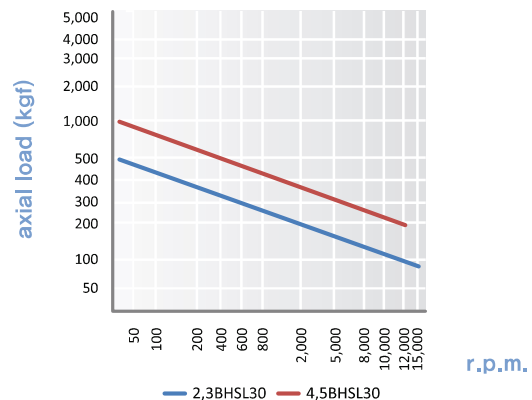
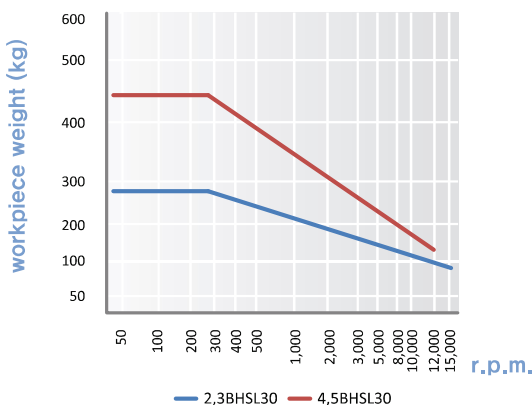
Dimension

Unit : mm, kg

MODEL	MT	A	B	C	D	E	F	G	L	Workpiece Weight	Max. R.P.M	Weight	Max. Run Out
043002 (044002)	2	50	20	68	54	35	4	10	157	280	15,000	1,8	0,002
043003 (044003)	3	50	20	85	54	35	4,5	12	174	280	15,000	1,8	0,002
043004 (044004)	4	70	30	108	75	53	5,3	14	236	450	12,000	2,2	0,002
043005 (044005)	5	70	30	136	75	53	6,3	18	264	450	12,000	5,2	0,002

※(MODEL NO) : Carbide Tip Type

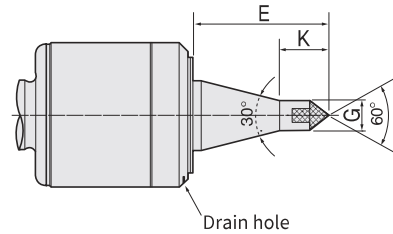
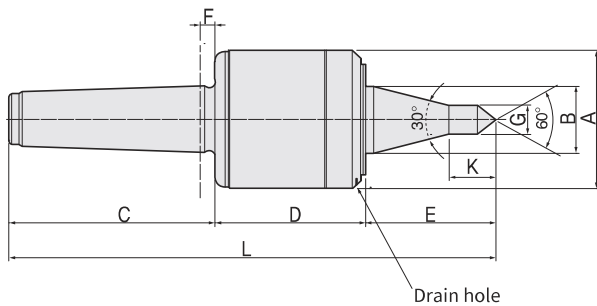
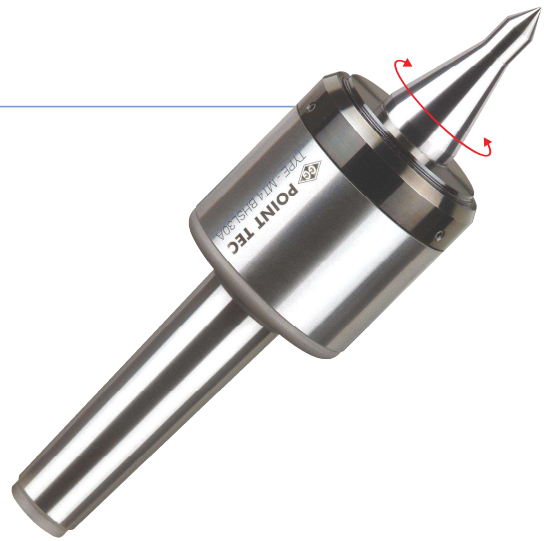
BHSL30 type technical data



BHSL30A

FEATURES ;

- Accuracy guaranteed to 0,002mm TIR (0,0001"),
- Excellent for grinders and CNC machines.
- Improve tool clearance and machining flexibility for cramped area work,
- High RPM (Up to 12,000),
- Heat-treated point to HRC 60±2,
- Based on triple angular bearings for superior performance,
- Labyrinth seal for coolant deflectors and super high speed,
- Anti-friction seal for coolant deflectors and high speed,
- Heat-treated body for extra strength, rigidity and long life,
- Carbide point available (BHSL30AC TYPE),
- Carbide point to HRa 90±5,



Available

Carbide Tipped Points BHSL30AC-TYPE

- MT2 : 046002 · MT5 : 046005
- MT3 : 046003
- MT4 : 046004

Dimension

Unit : mm, kg

MODEL	MT	A	B	C	D	E	F	G	K	L	Workpiece Weight	Max, R.P.M	Weight	Max, Run Out
045002 (046002)	2	50	20	68	54	45	4	10	19	167	250	15,000	1.8	0.002
045003 (046003)	3	50	20	85	54	45	4.5	10	19	184	250	15,000	1.8	0.002
045004 (046004)	4	70	30	108	75	63.5	5.3	12.5	23.5	246.5	390	12,000	2.2	0.002
045005 (046005)	5	70	30	136	75	63.5	6.3	12.5	23.5	274.5	390	12,000	5.2	0.002

※ (MODEL NO) : Carbide Tip Type

BHSL30A type technical data

