

HS

BN

BNN

BNH

BS

BHS

TN

WP

BP80

BP60

BNI

DC

SD

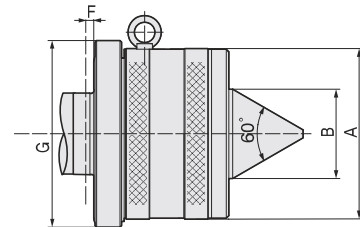
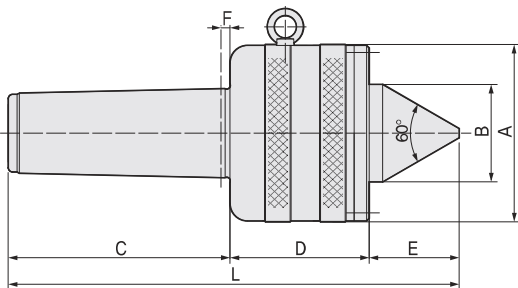
FD

HS

BB

FEATURES ;

- Accuracy guaranteed to 0,010mm TIR (0,0004"),
- Excellent for super heavy-duty work on big size machines,
- Heat-treated point to HRC 60±2,
- Two double-row cylindrical roller bearings and spherical roller thrust bearings support the primary load area of the point,
- Hardened point and body for extra strength, rigidity, and long life,
- Available draw-off nut type (HSN), 75 °angle point, 90 °angle point (special).



Available

Draw-off Nut Type HSN-TYPE

Dimension

Unit : mm, kg

MODEL	TAPER	A	B	C	D	E	F	G	L	Workpiece Weight	Max, R.P.M	Weight	Max, Run Out
HS80	1/10	178	110	203	154	96,1	10	200	453,1	10,000	650	35	0,010
HS100	1/10	198	110	250	157	101,5	15	230	508,5	15,000	500	48,3	0,010
HS110	1/10	238	125	365	162,5	121,5	15	250	649	20,000	500	60	0,010
HS120	1/10	238	125	293	162,5	121,5	15	250	577	20,000	500	58	0,010
HS80	1/20	178	110	203	154	96,1	10	200	453,1	10,000	650	36,2	0,010
HS100	1/20	198	110	250	157	101,5	15	230	508,5	15,000	500	49,5	0,010
HS110	1/20	238	125	365	162,5	121,5	15	250	649	20,000	500	60	0,010
HS120	1/20	238	125	293	162,5	121,5	15	250	577	20,000	500	58	0,010

Order example : 'HS100 1/10' = HS100 type with 1/10 taper