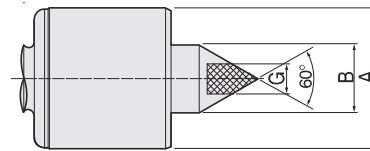
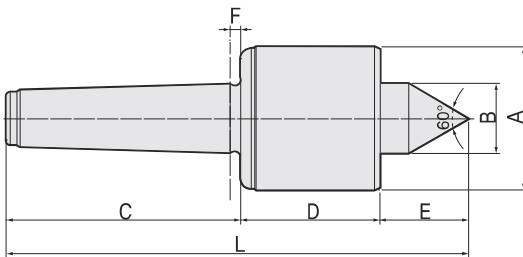


# BS

## FEATURES ;

- Accuracy guaranteed to 0,002mm TIR (0,0001").
- Excellent for CNC machines,
- High RPM (Up to 6,000).
- Heat-treated point to HRC 60±2.
- Based on double angular contact bearings for superior performance.
- Anti-friction seal for coolant deflectors and high speed.
- Heat-treated body for extra strength, rigidity and long life.
- Carbide point available (BSC TYPE).
- Carbide point to HRa 90±5.



## Available

### Carbide Tipped Points BSC-TYPE

- MT3 : 162003
- MT4 : 162004
- MT5 : 162005

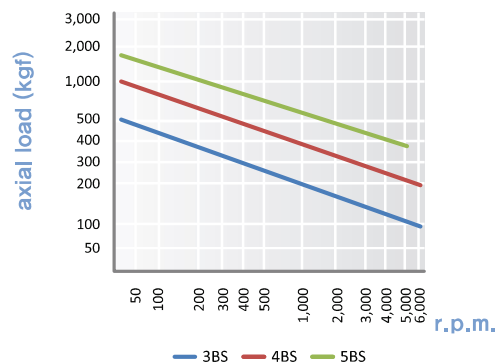
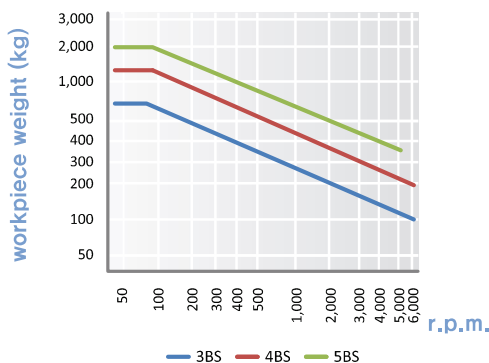
## Dimension

Unit : mm, kg

MODEL	MT	A	B	C	D	E	F	G	L	Workpiece Weight	Max, R.P.M	Weight	Max, Run Out
161003 (162003)	3	50	20	85	58	23	4.5	10	166	750	6,000	1.9	0,002
161004 (162004)	4	66	30	108	71	35	5.3	14	214	1,300	6,000	2.4	0,002
161005 (162005)	5	80	35	136	76	38	6.3	18	250	2,000	5,000	5.3	0,002

※(MODEL NO) : Carbide Tip Type

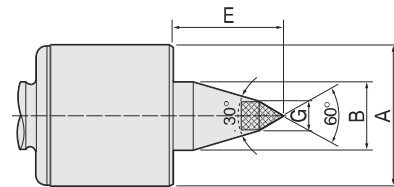
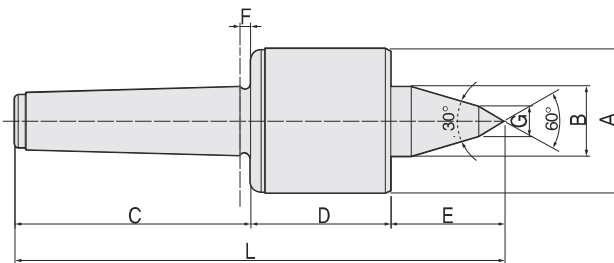
## BS type technical data



# BSL30

## FEATURES ;

- Accuracy guaranteed to 0,002mm TIR (0,0001").
- Excellent for CNC machines.
- Improve tool clearance and machining flexibility for cramped area work.
- High RPM (Up to 6,000).
- Heat-treated point to HRC 60±2.
- Based on double angular contact bearings for superior performance.
- Anti-friction seal for coolant deflectors and high speed.
- Heat-treated body for extra strength, rigidity and long life.
- Carbide point available (BSL30C TYPE).
- Carbide point to HRa 90±5.



## Available

Carbide Tipped Points BSL30C-TYPE

- MT3 : 164003
- MT4 : 164004
- MT5 : 164005

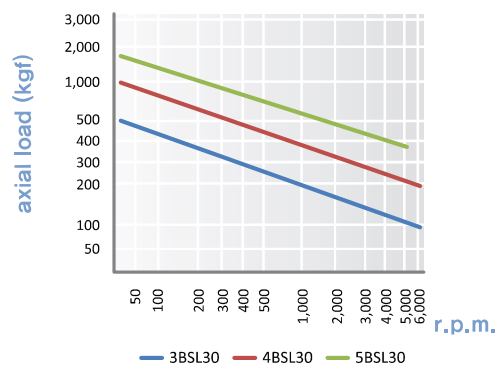
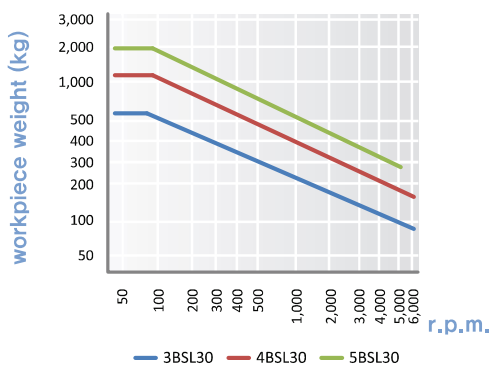
## Dimension

Unit : mm, kg

MODEL	MT	A	B	C	D	E	F	G	L	Workpiece Weight	Max, R.P.M	Weight	Max, Run Out
163003 (164003)	3	50	20	85	58	31	4,5	10	174	600	6,000	1,9	0,002
163004 (164004)	4	66	30	108	71	51	5,3	14	230	1,100	6,000	2,4	0,002
163005 (164005)	5	80	35	136	76	53	6,3	18	265	2,000	5,000	5,3	0,002

※(MODEL NO) : Carbide Tip Type

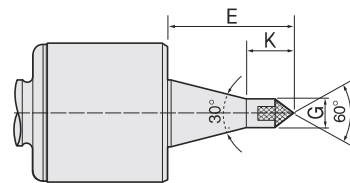
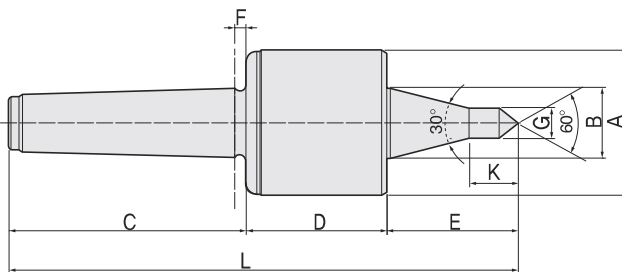
## BSL30 type technical data



# BSL30A

## FEATURES ;

- Accuracy guaranteed to 0,002mm TIR (0,0001").
- Excellent for CNC machines.
- Improve tool clearance and machining flexibility for cramped area work.
- High RPM (Up to 6,000).
- Heat-treated point to HRC 60±2.
- Based on double angular contact bearings for superior performance.
- Anti-friction seal for coolant deflectors and high speed.
- Heat-treated body for extra strength, rigidity and long life.
- Carbide point available (BSL30AC TYPE).
- Carbide point to HRA 90±5.



## Available

Carbide Tipped Points **BSL30AC-TYPE**

- MT3 : 166003
- MT4 : 166004
- MT5 : 166005

## Dimension

Unit : mm, kg

MODEL	MT	A	B	C	D	E	F	G	K	L	Workpiece Weight	Max, R.P.M	Weight	Max, Run Out
165003 (166003)	3	50	20	85	58	37	4,5	10	15	180	500	6,000	1,9	0,002
165004 (166004)	4	66	30	108	71	63,5	5,3	12,5	23	242,5	900	6,000	2,4	0,002
165005 (166005)	5	80	35	136	76	70	6,3	12,5	23,5	282	1,700	5,000	5,3	0,002

※(MODEL NO) : Carbide Tip Type

## BSL30A type technical data

