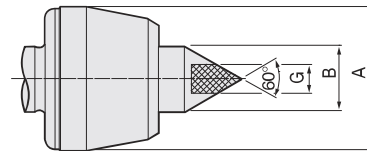
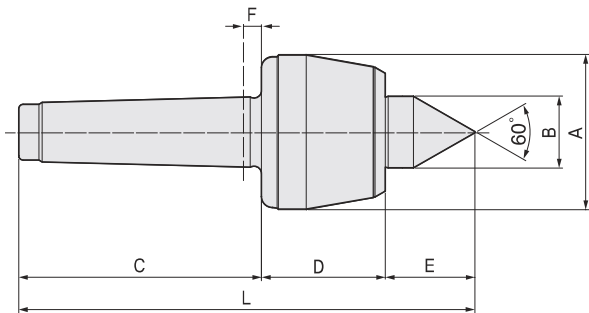


BN

FEATURES ;

- Accuracy guaranteed to 0,003mm TIR (0,0001").
- Excellent for CNC and conventional machines.
- Heat-treated point to HRC 60±2.
- High performance lip seal and deflected shaft design protects bearing space (Double Angular Contact Bearing) from ingress by dust and coolant.
- Heat-treated body for extra strength, rigidity and long life.
- Carbide point available (BNC TYPE).
- Carbide point to HRA 90±5.



Available

Carbide Tipped Points BNC-TYPE

- MT2 : 012002
- MT3 : 012003
- MT4 : 012004
- MT5 : 012005
- MT6 : 012006

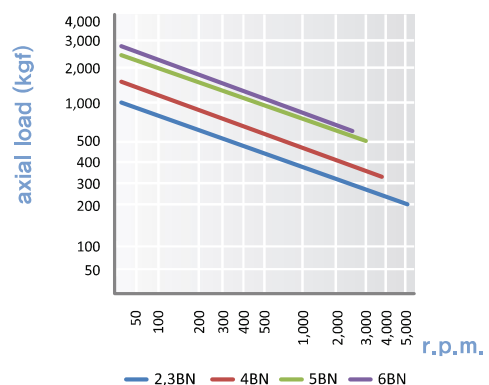
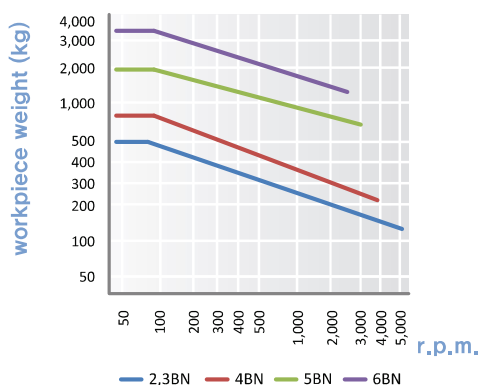
Dimension

Unit : mm, kg

MODEL	MT	A	B	C	D	E	F	G	L	Workpiece Weight	Max, R.P.M	Weight	Max, Run Out
011002 (012002)	2	50	25	68	43.5	29.5	6	10	141	500	5,000	0,7	0,003
011003 (012003)	3	50	25	85	43.5	29.5	6	10	158	500	5,000	0,8	0,003
011004 (012004)	4	69	32	108	55	40	8	14	203	800	3,800	1,85	0,003
011005 (012005)	5	88	40	136	70	50.5	8	18	256.3	2,000	3,000	4,2	0,003
011006 (012006)	6	105	50	189	81.5	57.5	10	30	328	3,500	2,800	8,7	0,005

※(MODEL NO) : Carbide Tip Type

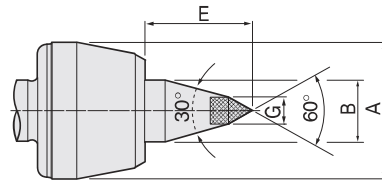
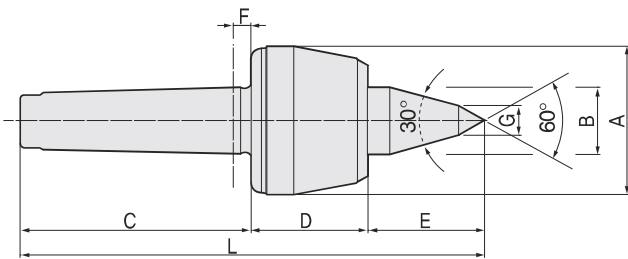
BN type technical data



BNL30

FEATURES ;

- Accuracy guaranteed to 0,003mm TIR (0,0001").
- Excellent for CNC and conventional machines.
- Improve tool clearance and machining flexibility for cramped area work.
- Heat-treated point to HRC 60±2.
- High performance lip seal and deflected shaft design protects bearing space (Double Angular Contact Bearing) from ingress by dust and coolant.
- Heat-treated body for extra strength, rigidity and long life.
- Carbide point available (BNL30C TYPE).
- Carbide point to HRa 90±5.



Available

- Carbide Tipped Points** **BNL30C-TYPE**
- MT2 : 014002 • MT5 : 014005
 - MT3 : 014003 • MT6 : 014006
 - MT4 : 014004

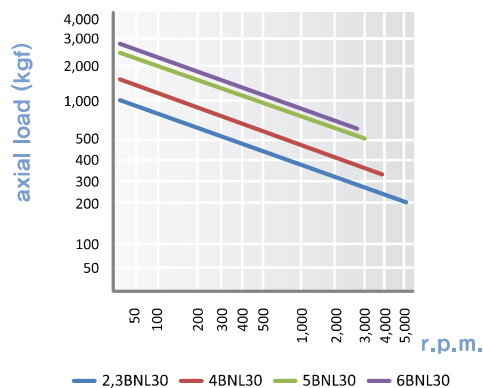
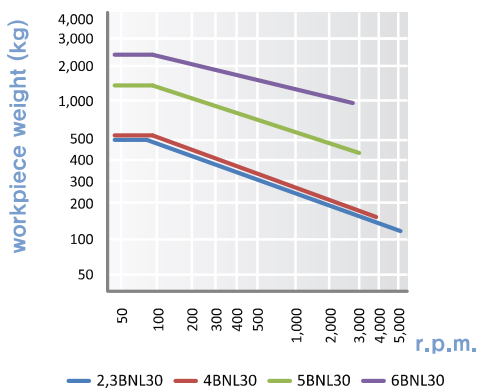
Dimension

Unit : mm, kg

MODEL	MT	A	B	C	D	E	F	G	L	Workpiece Weight	Max, R.P.M	Weight	Max, Run Out
013002 (014002)	2	50	25	68	43.5	40	6	10	151.5	500	5,000	0.7	0.003
013003 (014003)	3	50	25	85	43.5	45	6	12	175.5	500	5,000	0.8	0.003
013004 (014004)	4	69	32	108	55	53	8	14	216	550	3,800	1.9	0.003
013005 (014005)	5	88	40	136	70	65	8	16	271	1,500	3,000	4.4	0.003
013006 (014006)	6	105	50	189	81.5	77.5	10	18	348	2,500	2,800	8.7	0.005

※(MODEL NO) : Carbide Tip Type

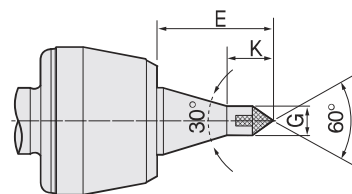
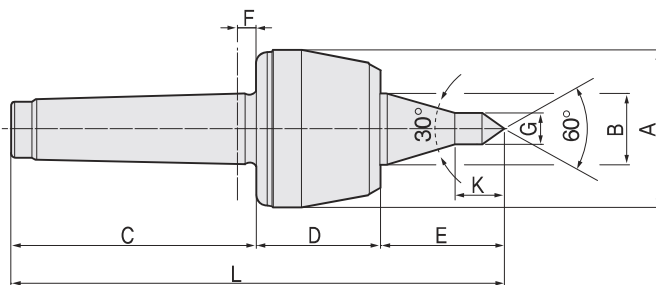
BNL30 type technical data



BNL30A

FEATURES ;

- Accuracy guaranteed to 0,003mm TIR (0,0001").
- Excellent for CNC and conventional machines.
- Improve tool clearance and machining flexibility for cramped area work.
- Heat-treated point to HRC 60±2.
- High performance lip seal and deflected shaft design protects bearing space (Double Angular Contact Bearing) from ingress by dust and coolant.
- Heat-treated body for extra strength, rigidity and long life.
- Carbide point available (BNL30AC TYPE).
- Carbide point to HRA 90±5.



Available

Carbide Tipped Points **BNL30AC-TYPE**

- MT2 : 016002
- MT3 : 016003
- MT4 : 016004
- MT5 : 016005
- MT6 : 016006

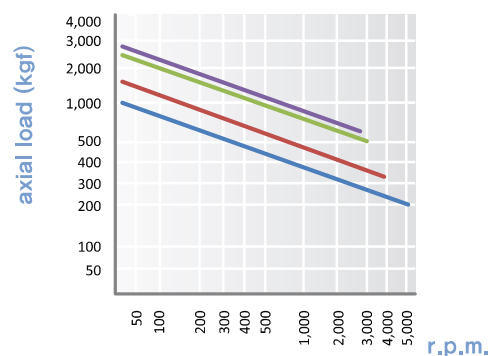
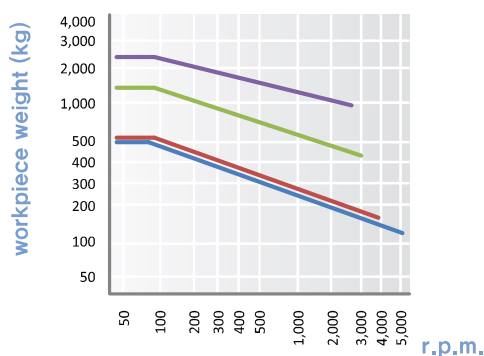
Dimension

Unit : mm, kg

MODEL	MT	A	B	C	D	E	F	G	K	L	Workpiece Weight	Max, R.P.M	Weight	Max, Run Out
015002 (016002)	2	50	25	68	43,5	50	6	10	19	161,5	500	5,000	0,7	0,003
015003 (016003)	3	50	25	85	43,5	50	6	10	19	178,5	500	5,000	0,8	0,003
015004 (016004)	4	69	32	108	55	63,5	8	12,5	23,5	226,5	550	3,800	1,9	0,003
015005 (016005)	5	88	40	136	70	80	8	12,5	23,5	286	1,500	3,000	4,4	0,003
015006 (016006)	6	105	50	189	81,5	105	10	14	30	375,5	2,500	2,800	8,7	0,005

※(MODEL NO) : Carbide Tip Type

BNL30A type technical data



— 2,3BNL30A — 4BNL30A — 5BNL30A — 6BNL30A

— 2,3BNL30A — 4BNL30A — 5BNL30A — 6BNL30A