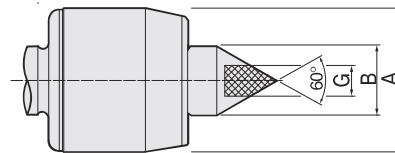
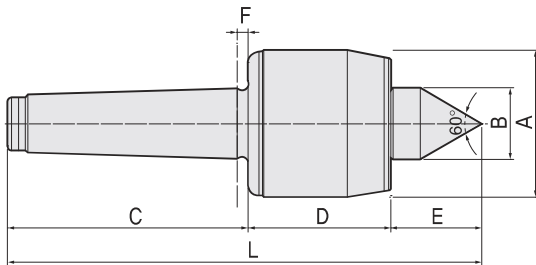


BNH

FEATURES ;

- Accuracy guaranteed to 0,002mm TIR (0,0001"),
- Excellent for grinders and CNC machines,
- High RPM (Up to 6,000).
- Heat-treated point to HRC 60±2,
- Based on roller bearings for superior performance,
- Anti-friction seal for coolant deflectors and high speed,
- Heat-treated body for extra strength, rigidity and long life,
- Carbide point available (BNHC TYPE),
- Carbide point to HRA 90±5,



Available

Carbide Tipped Points BNHC-TYPE

- MT3 : 032003
- MT4 : 032004
- MT5 : 032005

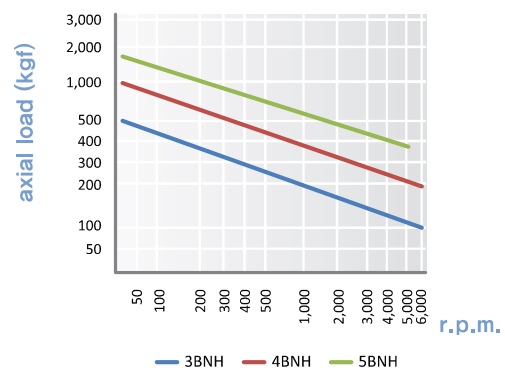
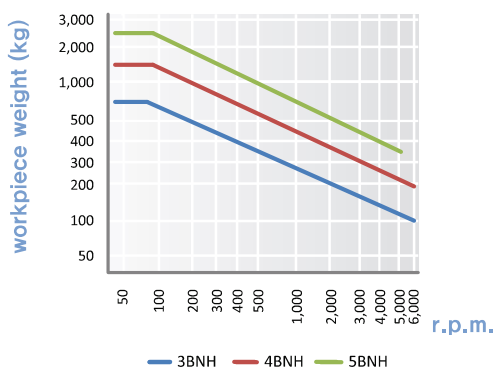
Dimension

Unit : mm, kg

MODEL	MT	A	B	C	D	E	F	G	L	Workpiece Weight	Max, R.P.M	Weight	Max, Run Out
031003 (032003)	3	50	22	85	51,5	26	4,5	10	162,5	750	6,000	1,8	0,002
031004 (032004)	4	66	32	108	64	41	5,3	14	213	1,500	6,000	2,2	0,002
031005 (032005)	5	80	40	136	70	41	6,3	18	247	2,600	5,000	5,2	0,002

※(MODEL NO) : Carbide Tip Type

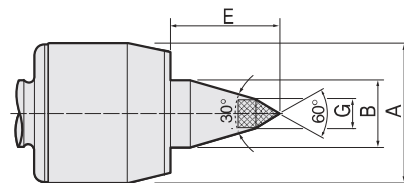
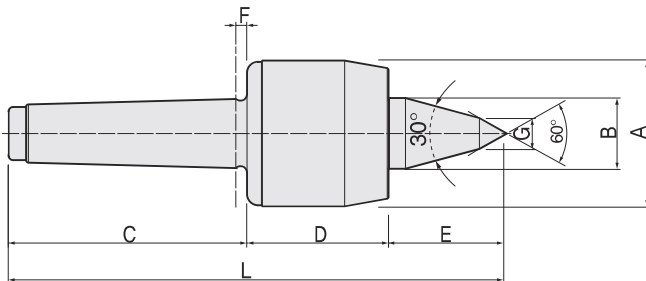
BNH type technical data



BNHL30

FEATURES ;

- Accuracy guaranteed to 0,002mm TIR (0,0001").
- Excellent for grinders and CNC machines.
- Improve tool clearance and machining flexibility for cramped area work.
- High RPM (Up to 6,000),
- Heat-treated point to HRC 60±2,
- Based on roller bearings for superior performance.
- Anti-friction seal for coolant deflectors and high speed.
- Heat-treated body for extra strength, rigidity and long life.
- Carbide point available (BNHL30C TYPE).
- Carbide point to HRa 90±5.



Available

Carbide Tipped Points **BNHL30C-TYPE**

- MT3 : 034003
- MT4 : 034004
- MT5 : 034005

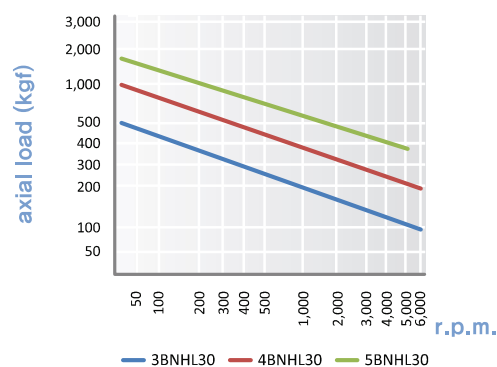
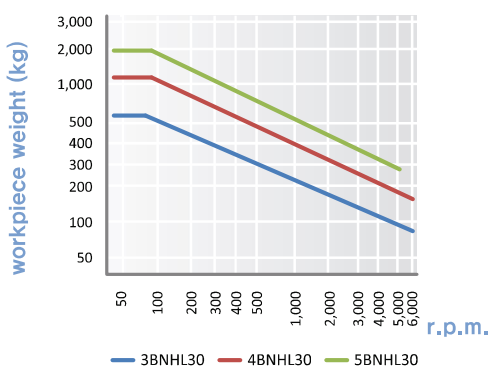
Dimension

Unit : mm, kg

MODEL	MT	A	B	C	D	E	F	G	L	Workpiece Weight	Max, R.P.M	Weight	Max, Run Out
033003 (034003)	3	50	22	85	51.5	35	4.5	12	171.5	600	6,000	1.9	0,002
033004 (034004)	4	66	32	108	64	53	5.3	14	225	1,100	6,000	2.2	0,002
033005 (034005)	5	80	40	136	70	65	6.3	16	271	2,000	5,000	5.2	0,002

※ (MODEL NO) : Carbide Tip Type

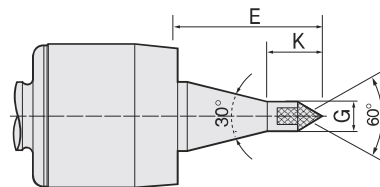
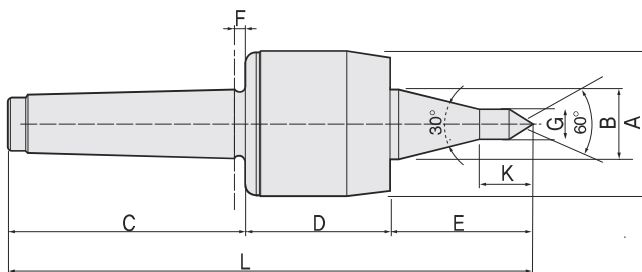
BNHL30 type technical data



BNHL30A

FEATURES ;

- Accuracy guaranteed to 0,002mm TIR (0,0001").
- Excellent for grinders and CNC machines.
- Improve tool clearance and machining flexibility for cramped area work.
- High RPM (Up to 6,000),
- Heat-treated point to HRC 60±2,
- Based on roller bearings for superior performance.
- Anti-friction seal for coolant deflectors and high speed.
- Heat-treated body for extra strength, rigidity and long life.
- Carbide point available (BNHL30AC TYPE).
- Carbide point to HRA 90±5,



Available

Carbide Tipped Points BNHL30AC-TYPE

- MT3 : 036003
- MT4 : 036004
- MT5 : 036005

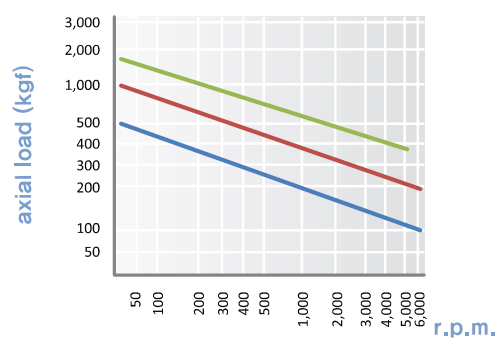
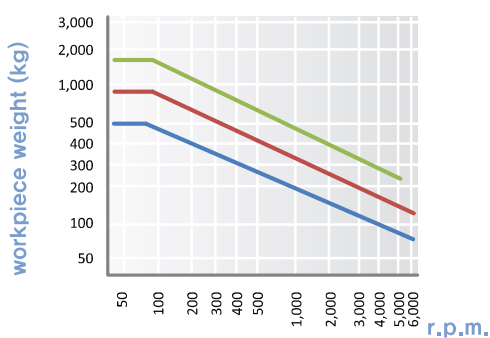
Dimension

Unit : mm, kg

MODEL	MT	A	B	C	D	E	F	G	K	L	Workpiece Weight	Max. R.P.M	Weight	Max. Run Out
035003 (036003)	3	50	22	85	51,5	50	4,5	10	19	181,5	500	6,000	1,9	0,002
035004 (036004)	4	66	32	108	64	63,5	5,3	12,5	23,5	235,5	900	6,000	2,2	0,002
035005 (036005)	5	80	40	136	70	80	6,3	12,5	23,5	286	1,700	5,000	5,2	0,002

※(MODEL NO) : Carbide Tip Type

BNHL30A type technical data



— 3BNHL30A — 4BNHL30A — 5BNHL30A

— 3BNHL30A — 4BNHL30A — 5BNHL30A