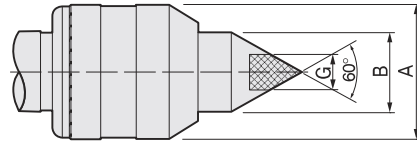
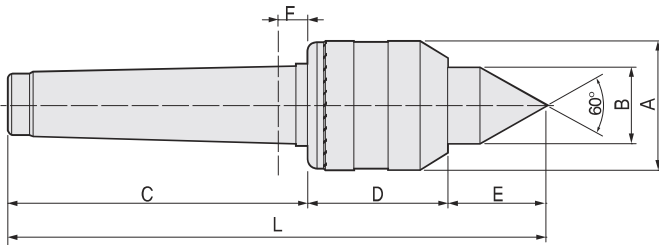


# BB

## FEATURES ;

- Accuracy guaranteed to 0,003mm TIR (0,0001").
- Excellent for light/medium-duty work on conventional lathe machines.
- Slim diameter improve tool clearance
- Heat-treated point to HRC 60±2.
- Rear bearing is sealed, protecting assembly from coolant and chips.
- Carbide point available (BBC TYPE).



## Available

Carbide Tipped Points **BBC-TYPE**

- MT3 : 122003
- MT4 : 122004
- MT5 : 122005

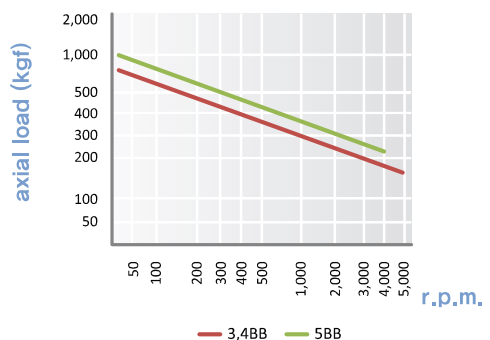
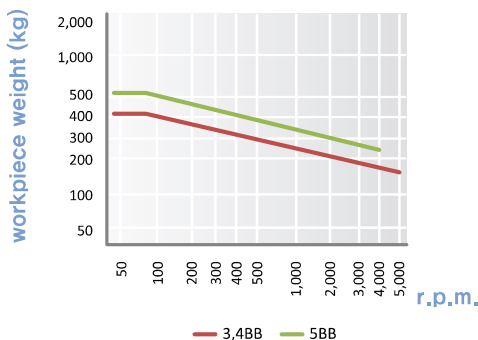
## Dimension

Unit : mm, kg

MODEL	MT	A	B	C	D	E	F	G	L	Workpiece Weight	Max, Axial Load	Max, R.P.M	Weight	Max, Run Out
121003 (122003)	3	44,5	25	85	44	32,5	5,3	12	161,5	400	600	5,000	1	0,003
121004 (122004)	4	44,5	25	108	44	32,5	5,3	12	184,5	400	600	5,000	1,2	0,003
121005 (122005)	5	63	28	136	58	35	6,3	14	229	500	750	4,000	2,8	0,003

※(MODEL NO) : Carbide Tip Type

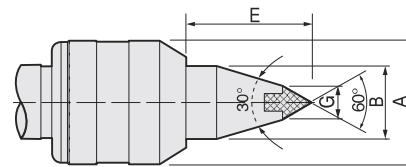
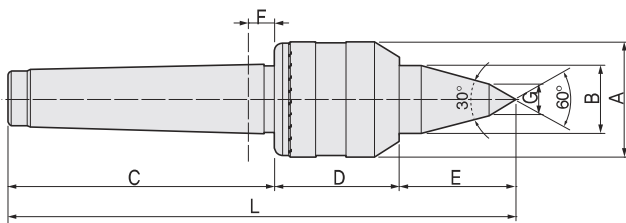
## BB type technical data



# BBL30

## FEATURES ;

- Accuracy guaranteed to 0,003mm TIR (0,0001"),
- Excellent for light/medium-duty work on conventional lathe machines.
- Slim diameter improve tool clearance,
- Heat-treated point to HRC 60±2,
- Rear bearing is sealed, protecting assembly from coolant and chips.
- Carbide point available (BBL30C TYPE).



## Available

Carbide Tipped Points **BBL30C-TYPE**

- MT3 : 124003
- MT4 : 124004
- MT5 : 124005

## Dimension

Unit : mm, kg

MODEL	MT	A	B	C	D	E	F	G	L	Workpiece Weight	Max Axial Load	Max, R.P.M	Weight	Max, Run Out
123003 (124003)	3	44,5	22	85	44	36	5,3	12	165	320	600	5,000	1	0,003
123004 (124004)	4	44,5	22	108	44	36	5,3	12	188	320	600	5,000	1,2	0,003
123005 (124005)	5	63	28	136	58	44	6,3	14	236	400	750	4,000	3	0,003

※(MODEL NO) : Carbide Tip Type

## BBL30 type technical data

